



Daisy and the Mechanical Boy

Research and Development
by Jane Lee
18044557

04/03/2024

Jane

- ☐ Jade - Can you look into some famous myths/stories that involve jade in Britain and China
- ☐ How does jade symbolise the soul? Does it hold it within itself
- ☐ Who carves jade? What are its symbols etc
- ☐ Look at boys' fashion in the late Victorian era - how could this be worn by Tom?
- ☐ Can you look at and perhaps save some useful resources on male fashion in the period? Both in Britain and China (if you feel up to it)
- ☐ Tom, can we have 3 rough sketches of differing designs for him?
 - ☐ Faces
 - ☐ Hairstyles
 - ☐ Costumes
- ☐ A rough design for Daisy
- ☐ Gather research in presentation (can be rough)

Table of contents

01 Research

Topics covered:

Jade, Relevant Chinese Mythology & Symbols, British stories, Late Victorian Era Fashion for young children (more specifically boys), Chinese clothing
May also touch on desserts and tea history in preparation for the gadget designs.

Character ***02 Design 1: Tom***

This section will focus mainly on Faces and Hairstyle iterations for Tom.

Character Design ***03 2: Tom Outfit***

Different outfits for Tom, including outfits for different scenarios.

Character Design ***04 4: Daisy*** Outfits etc.

01

Research

(See summary of covered topics on the table of contents.)

Sources (For Jade)

<https://www.artsmia.org/terracotta-warriors/preview.html>
<https://www.gemsociety.org/article/history-legend-jade-gems-vore/>
<https://geology.com/minerals/mohs-hardness-scale.shtml>
<https://www.historyskills.com/classroom/year-7/jade-emperor/>
<https://www.europeanguanxi.com/post/the-importance-of-jade-in-chinese-culture>
Bogus, D. Discovering Chinese Jade Folklore, Symbolism and Legend. Shop LC. 04/12/2019. <https://blog.shoplc.com/chinese-jade/>
Cho, A. Jade Meaning, Healing Properties, & Uses. The Spruce. Updated 31/08/2022. <https://www.thespruce.com/jade-meaning-ancient-strength-and-serenity-1274373>

Sources (For Clothing slides)

<https://vintagedancer.com/victorian/victorian-childrens-clothing-and-fashion/>
<https://docs.google.com/document/d/1R8eulTsb9Zlc7h2H917dNjZS9s0rlq90Au7LpSS9F2k/edit#heading=h.abuq481dcbx>
<https://collections.lacma.org/node/225209>
<https://collections.vam.ac.uk/item/O130686/young-england---a-watercolour-fripp-alfred-downing/>
<https://collections.vam.ac.uk/item/O1272502/photograph-spencer-ernest/>
<https://collections.vam.ac.uk/item/O48578/granville--vent-doll-19th-ventriloquists-figure/>
<https://collections.vam.ac.uk/item/O1272496/photograph-a--g/>
<https://collections.vam.ac.uk/item/O1272493/photograph-donovan--son/>
<https://collections.vam.ac.uk/item/O227944/guy-little-theatrical-photograph-photograph-london-stereoscopic-and/>
<https://collections.vam.ac.uk/item/O227946/guy-little-theatrical-photograph-photograph-london-stereoscopic-and/>
<https://collections.vam.ac.uk/item/O141832/guy-little-theatrical-photograph-photograph-window--grove/>
<https://audreydoeskaren.tumblr.com/post/651081009485561856/abridged-history-of-early-20th-century-chinese>

Research: Jade (Relevant information snippets)

Basic information

The mineral we call jade is used mainly to describe two different types: Jadeite and Nephrite. Chinese folklore mostly developed around Nephrite specifically. They both have similar toughness on the Mohs scale (6.5-7).

Folklore

“A medicinal cult arose around jade in Ancient China. People believed mixing powdered jade with water produced a panacea to strengthen the body and prolong life. If ingested just prior to death, this mixture supposedly even delayed the decomposition of the body.”

“The mythological creature of the dragon, well known in Chinese culture, has its eyes or veins often carved with deep green jade stone to represent the strength of the creature and the ability to live a better life (Cho, 2022).”

Symbolism

“Jade symbolism includes associations with nobility and wealth. Many consider it a protector of generations, living and dead.” The Chinese character for “jade”, (玉, yù) has a similarity with the character for “emperor” (王, wáng). By adding the small stroke on the bottom right the “jade” Chinese character can also mean “the emperor’s stone”. (Pang, 2021).

It was also known as the “stone of heaven”, symbolising prosperity, success, good luck, renewable, longevity and even immortality (Bogus, 2019).

金有价，玉無價 (Chinese proverb meaning ‘You can put a price on gold, but Jade is priceless’)

“The carving of the jade stone also has significance. Mountains represent longevity, bats are happiness, butterflies represent long life and love, dragons are power, prosperity, and goodness, the peach fruit represents immortality and the circular disk with a hole in the middle is heaven (Bogus, 2019).” Jade carvers were very hard to find.

“Jade was popularised as sacrificial vessels and were buried with the dead. For example, Liu Sheng (劉勝, liú shèng), in 113 BCE buried in a jade suit with 2,498 pieces of jade stitched together with gold thread (Shan, 2018).”

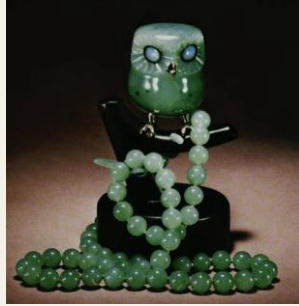
How does Jade symbolise the soul?

“The jade stone is qì (气), the life force that flows through and around all living things according to Chinese customs. It is believed to connect the heaven and earth realms as the stone comes from earth but its luminous quality is like the sunlight and the stars (Cho, 2022).”

China’s most famous professor and political theorist, Confucius (551-479 BCE) (孔子, kǒng zǐ), wrote in the Book of Rites (礼记, lǐ jì) eleven virtues that are represented in the jade stone: benevolence, justice, propriety, truth, credibility, music, loyalty, heaven, earth, morality and intelligence (Shan, 2018).

Research: Jade (Photos + Personal Thoughts)

Examples of Jade, both Jadeite and Nephrite.



**Money Plant
(could be symbolically significant)**



Depending on the jade's colour, some describe it as the yin (阴 yīn) and yang (阳 yáng) . The yin is lighter and more translucent jade considered to have softer energies while the yang is a deeper green and more opaque version of jade considered to have more significant energy (Cho, 2022).

Research: Late Victorian Era Clothing for Young boys



1873 boys cloak



1896 boys sailor suit



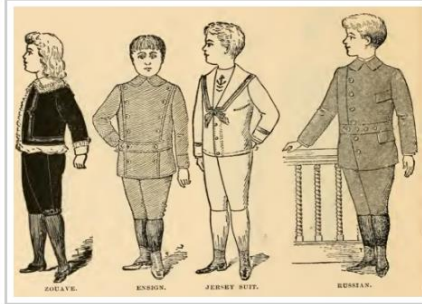
1880 boys play suit



1894 boys coats and jackets



1894 boys coats



Research: Late Victorian Era Clothing for Young Girls



VintageDancer

1865 plaid dress under blue jacket



1873 girls apron dress





02

Character Design 1: Tom

Different iterations of hairstyles
and faces he could have.



Upside Down



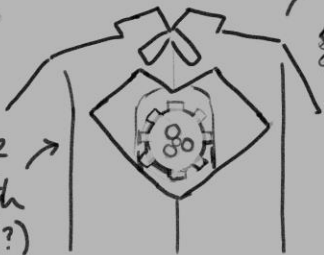
Chest door
(with window)

Key →
(for winding him up)



Heart shaped
hair shapes

Under Cape
Shirt with
hole (?)



keyhole
+
3 mystery slots

(Aunt could've made Tom to have additional function(s) unknown to both Daisy and Tom himself. Unlocked via slotting in the part into the circle slots.)





Feedback for Jane



Tom
→ lower frame rate? → more mechanical
→ just for lip sync?

Jane's feedback?

Hunting Jacket?







Press to Click this out & turn to wind up for time travel

Press animal button to narrow down year in date setter

Gauge for When is Tom going to fall apart next?

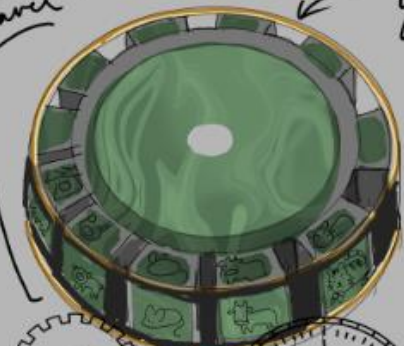
Pressure levels

Spring that winds Tom up

Master gear (sets the year)
Contains Jade core, Jade animal segments (hole in the middle) = heaven
Ichor levels

Element setter

Date setter



Jade heart for the gem heart.

Could have references to the chinese zodiac animals

Heart is a window to other worlds

He is easily trackable because evil tom can locate them via chinese zodiac years (has the same thing inside him technically)

Tom gets excited about time travel because he has subconscious 'memories' of said time period (implications that the heart has memories of its travels with aunt vi)

later episodes they can input dates but for now they can't

evil tom has a fake jade heart (perhaps got damaged and replaced somehow**) hes after real jade tom's heart **ship myth

jade centred surrounded by the clockwork, ichor* (blood of the gods), heating induce time travel

vials of ichor
idea a: he drinks it

idea b: daisy has to administer it to him



03

Character Design 2: Tom Outfit

Different iterations of hairstyles
and faces he could have.





04

Character Design 4: Daisy

Different ideas for how she could look (+ a proposal for her Chinese name due to her mixed heritage)



Daisy's Chinese name

杨松菊, 杨白菊, 杨辰菊
林松菊, 林白菊, 林辰菊

Proposed for Daisy's Chinese Name.
(Yáng Sōng Jú, Yáng Bái Jú or Yáng Chén Jú)
(Lín Sōng Jú, Lín Bái Jú or Lín Chén Jú)

My mum and I were brainstorming, and we landed on these.



A nickname for her could be 小菊 meaning little chrysanthemum.

杨 Yang = Aspen, Willow.

林 Lin(g) = Forest, Sun goddess, gemstone.

Song = Pine tree, sounds boyish which reflects how her interests are more 'manly'. Pine tree is also associated with being resilient.

白 Bai = White.

辰 Chen = Early morning (the common blooming time of a daisy)

菊 Ji = Chrysanthemum, the name of this flower = 'gold flower' and it has a history of being featured in Chinese poems. Also has quotations with strength and resilience.

I thought it paired quite well with her role of administering ichor to Tom and her inventive/resourceful nature. Also, chrysanthemum is a popular tea, tying to the tea house where she lives.